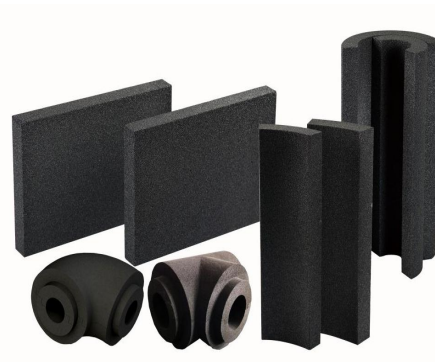


ZES500 Cellular Glass

1. Product Introduction

ZES500 Cellular Glass is a rigid inorganic thermal insulating product, composed of uniform closed cells. It is made from pure glass and foaming agents, through high temperature foaming and annealing. It is characterized by lightweight and low thermal conductivity, and is more suitable for pipe and equipment insulation.



2. Properties (Comply with ASTM C552)

Physical Property		Unit	Index	Testing Method
Density		kg/m ³	110±8%	ASTM C303
Thermal Conductivity	Avg. Value	W/(m·K) (10°C)	0.038	ASTM C177 /ASTM C518
	Highest Single value		0.040	
Compressive Strength	Avg. Value	MPa	0.5	ASTM C165
	Lowest Single Value		0.35	
Flexural Strength		MPa	≥ 0.3	ASTM C203
Water Vapor Permeability		ng/ (pa.m.s)	≤ 0.007	ASTM E96
Water Absorption by Vol		Vol%	≤ 0.5	ASTM C240
Flame Spread Index			≤ 5	ASTM E84
Linear Thermal Expansion Coefficient		1/°C	9×10 ⁻⁶	ASTM E228
Service Temp.		°C	-268~+480	
Dimension		mm	L: 600~620	
Component		Pure Glass, Free from Asbestos		

3. Product Application

It is mainly applied to the insulation for low temperature/cryogenic pipes, vessels, tanks and equipment. It can also be used in dual temperature system.

4. Packing & Storage

- (1) Carton packing, special packing is available on request.
- (2) During shipment, keep cartons tightly closed, keep stacks upright to protect from collision. If necessary, reinforcement can be applied.
- (3) Store in weatherproofing, dry and ventilated environment, no more than 6 layers stack is preferred.

5. Application and Considerations

- (1) Cellular glass is fragile, shall be handled gently, avoid rolling or collision.
- (2) Fix cellular glass segments by stainless steel band when applied in pipe/equipment insulation.
- (3) Cut it with saw during application..